

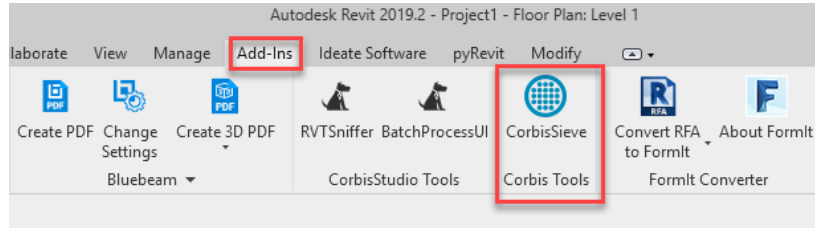
REVIT PLUGINS

SNIFFER + CORBISSIEVE



Prepared by:
MM.DD.YYYY

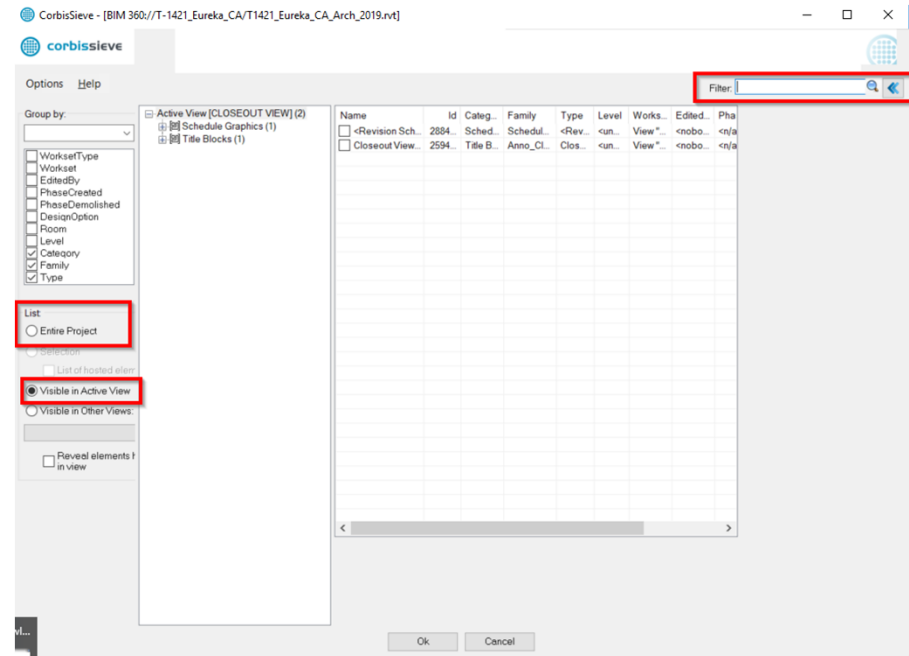
01. PLUG INS: CorbisSieve



Manage Revit elements in an easier way and get better QA in your models, saving time and increasing consistency in data handling.

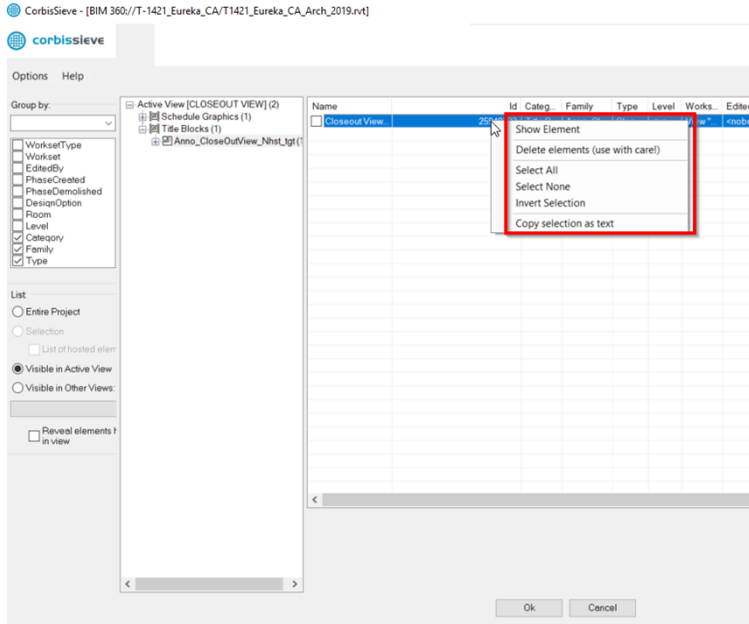
- Search in multiple views.
- Find imbedded .dwg files
- Browse beyond project browser
- Clean up line styles
- Easily check worksets elements

You can filter items per **view** , per **project** or per **ID**

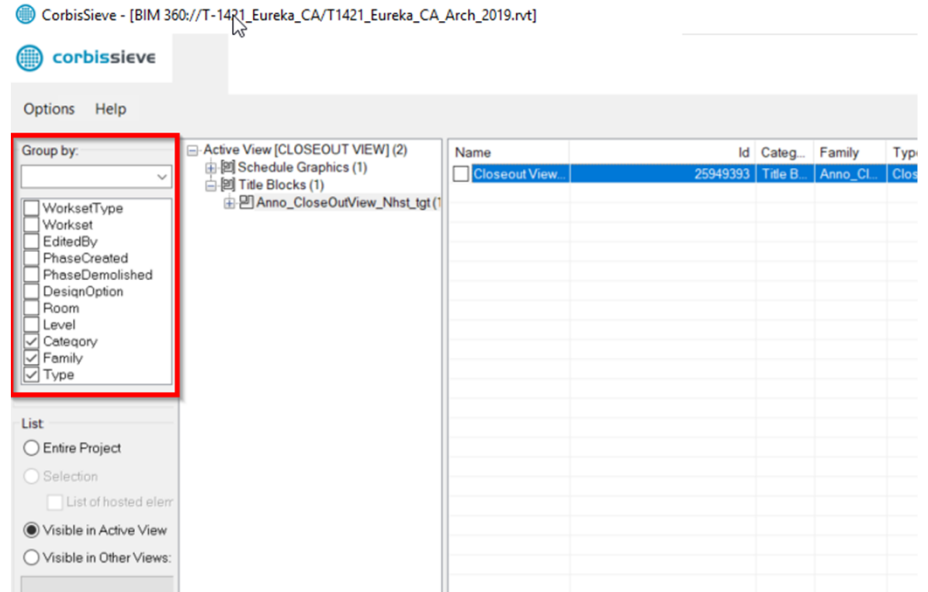


01. PLUG INS: CorbisSieve

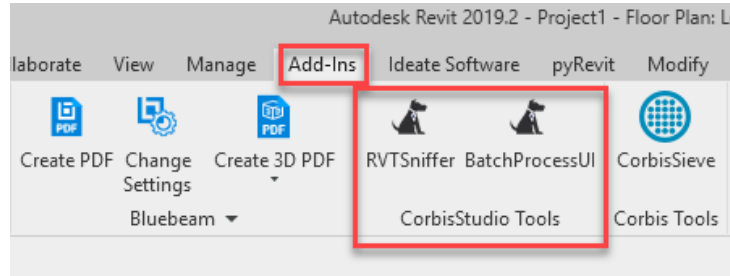
You can select elements and find in the model



You can search by **group**

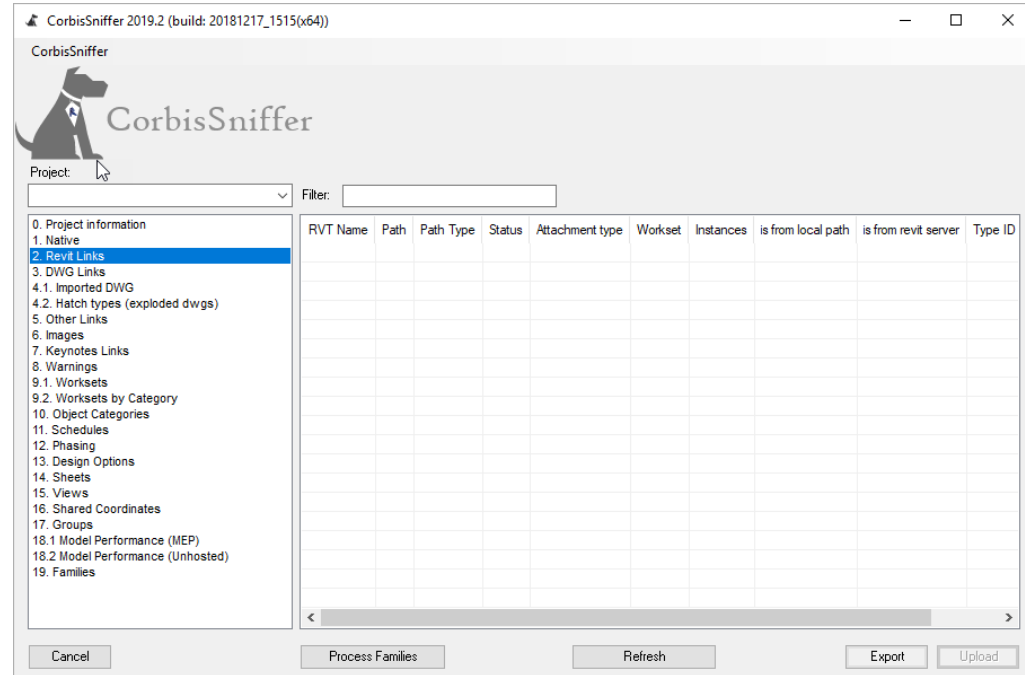


02. PLUG INS: Sniffer



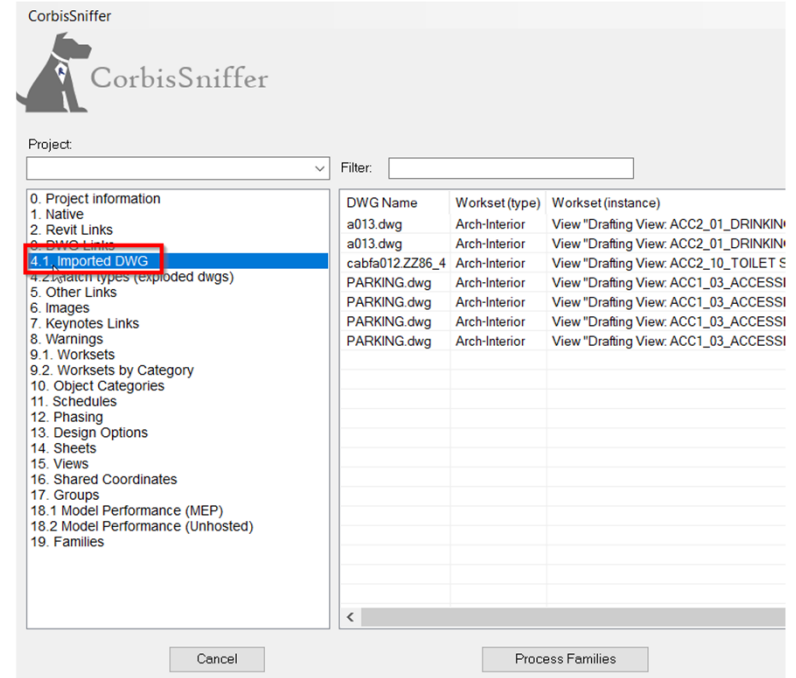
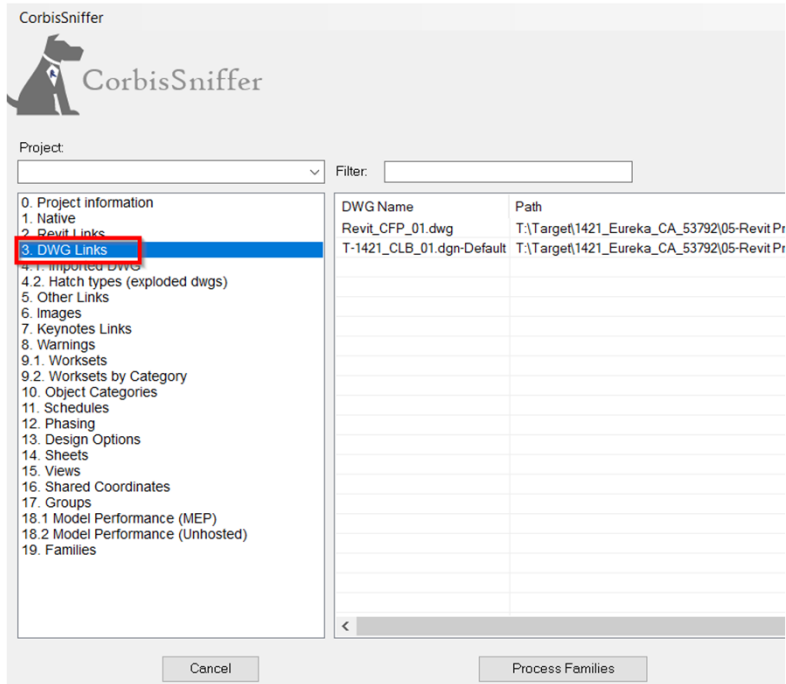
The ultimate Revit plugin to automate the data extraction from your models, saving time and ensuring consistency in the process.

- Extracts the information from your Revit® model in a single click
- Provides you with a spreadsheet with your data for easy review and control.
- Gives you a simple way to check compliance with your BIM® Standards.



02. PLUG INS: Sniffer

Let you know which cad files are **link** or **import**.



02. PLUG INS: Sniffer

Identify **dwg** hatch

If say **true** there is a dwg. Hatch.

CorbisSniffer

Project: Filter:

	Name	Name contains .dwg	Background Fill Pattern	Background Pattern Color	Background Pattern Type	Foreground Fill Pattern
0. Project Information	011 (3)-1	False		0		<Solid fill> [Drafting]
1. Native	011 (3)-2	False		0		
2. Revit Links	011.ZZ117_1-404	False		0		<Solid fill> [Drafting]
3. DWG Links	011.ZZ117_2-405	False		0		<Solid fill> [Drafting]
4. Imported DWG	011.ZZ117_3-406	False		0		<Solid fill> [Drafting]
4.2. Hatch types (exploded dwgs)	011.ZZ117_4-407	False		0		<Solid fill> [Drafting]
5. Other Links	011.ZZ117_5-408	False		0		<Solid fill> [Drafting]
6. Images	011.ZZ117_6-401	False		0		<Solid fill> [Drafting]
7. Keynote Links	011.ZZ117_7-402	False		0		<Solid fill> [Drafting]
8. Warnings	011.ZZ117_403	False		0		<Solid fill> [Drafting]
9.1. Worksets	011.ZZ67_10-288	False		0		<Solid fill> [Drafting]
9.2. Worksets by Category	011.ZZ67_11-289	False		0		<Solid fill> [Drafting]
10. Object Categories	011.ZZ67_12-275	False		0		<Solid fill> [Drafting]
11. Schedules	011.ZZ67_1-279	False		0		<Solid fill> [Drafting]
12. Phasing	011.ZZ67_14-280	False		0		<Solid fill> [Drafting]
13. Design Options	011.ZZ67_14-411	False		0		<Solid fill> [Drafting]
14. Sheets	011.ZZ67_15-281	False		0		<Solid fill> [Drafting]
15. Views	011.ZZ67_15-412	False		0		<Solid fill> [Drafting]
16. Shared Coordinates	011.ZZ67_16-283	False		0		<Solid fill> [Drafting]
17. Groups	011.ZZ67_16-413	False		0		<Solid fill> [Drafting]
18.1 Model Performance (MEP)						
18.2 Model Performance (Unhosted)						
19. Families						

Cancel Process Families Refresh Export Upload

02. PLUG INS: Sniffer

We can know in which sheet do you already apply the **schedules**

CorbisSniffer

Project: Filter:


Schedule Name	Schedule Id	Sch...	Sheet Name	Sheet Number	Phase
Schedule <Revision Schedule> 22	30245987	n/a	GENERAL ARCHITECTURAL INFORMATION	A001	n/a
Schedule <Revision Schedule> 23	30245997	n/a	GUEST SERVICES PLANS & ELEVATIONS	A303	n/a
Schedule <Revision Schedule> 24	30246062	n/a	DEMOLITION FLOOR PLAN	AD111	n/a
Schedule <Revision Schedule> 25	30246002	n/a	BAKERY / DELI FLOOR & FINISH PLAN	A401	n/a
Schedule <Revision Schedule> 26	30246007	n/a	BAKERY / DELI REFLECTED CEILING PLAN	A402	n/a
Schedule <Revision Schedule> 27	30246012	n/a	GROCERY FINISH PLAN & ELEVATIONS	A405	n/a
Schedule <Revision Schedule> 28	30246017	n/a	MEAT / PRODUCE DEPARTMENT PLANS	A411	n/a
Schedule <Revision Schedule> 29	30246027	n/a	DAIRY COOLER & GROCERY REFLECTED CEILING PLAN	A422	n/a
Schedule <Revision Schedule> 30	30246097	n/a	FLOOR FINISH, WALL FINISH PLAN & DETAILS	A121	n/a
Schedule <Revision Schedule> 31	30246022	n/a	DAIRY COOLER & GROCERY FLOOR PLANS	A421	n/a
Schedule <Revision Schedule> 32	30246032	n/a	WALK IN COOLER / FREEZER PLANS (MANUFACTURER)	A455	n/a
Schedule <Revision Schedule> 33	30246037	n/a	WALK IN COOLER / FREEZER PLANS	A451	n/a
Schedule <Revision Schedule> 35	30246042	n/a	LIQUOR PLANS	A391	n/a
Schedule <Revision Schedule> 34	30246112	n/a	COVER SHEET	G001	n/a
Schedule <Revision Schedule> 35	30246187	n/a	PARTITION TYPES & SCHEDULES	A601	n/a
Schedule <Revision Schedule> 36	30246132	n/a	OPTICAL PLANS, ELEVATIONS & DETAILS	A323	n/a
Schedule <Revision Schedule> 37	30246137	n/a	WALL SECTIONS	A212	n/a
Schedule <Revision Schedule> 38	30246067	n/a	ENLARGED REFLECTED CEILING PLANS & DETAILS	A133	n/a
Schedule <Revision Schedule> 39	30246072	n/a	STARBUCKS PLANS, ELEVATIONS & DETAILS	A315	n/a
Schedule <Revision Schedule> 4	30245942	n/a	FITTING ROOM PLANS, ELEVATIONS & DETAILS	A341	n/a

Cancel Process Families Refresh Export Upload

02. PLUG INS: Sniffer

How many elements do you have in the different **Phases**?

CorbisSniffer



Project: Filter:

Phase Name	Sequence Number	Elements Created	Elements Demolished
2019 Remodel	2	591	271
Existing	1	3339	1

0. Project information
1. Native
2. Revit Links
3. DWG Links
4.1. Imported DWG
4.2. Hatch types (exploded dwgs)
5. Other Links
6. Images
7. Keynotes Links
8. Warnings
9.1. Worksets
9.2. Worksets by Category
10. Object Categories
11. Schedules
12. Phasing
13. Design Options
14. Sheets
15. Views
16. Shared Coordinates
17. Groups
18.1 Model Performance (MEP)
18.2 Model Performance (Unhosted)
19. Families

Cancel Process Families Refresh Export Upload

02. PLUG INS: Sniffer

Select **ID** of the element and you could find it in the model.

CorbisSniffer 2019.2 (build: 20190225_1515(x64))

CorbisSniffer

Project: Filter:

	Path	Type	Status	Workset (type)	Workset (instance)	Instances	Type ID	Instance ID
0. Project information								
1. Native								
2. Revit Links	Eureka_CA_53792(05-Revit Project(02-Linked)CFP)Revit_CFP_01.dwg	Relative	Loaded	Link-CFP	Link-CFP	1	29343856	29359969
3. DWG Links	Eureka_CA_53792(05-Revit Project(02-Linked)CLB)T-1421_CLB_01.dgn	Relative	Loaded	Link-CLB	Link-CLB	1	29318272	29310960
4.1. Imported DWG								
4.2. Hatch types (exploded dwgs)								
5. Other Links								
6. Images								
7. Keynotes Links								
8. Warnings								
9.1. Worksets								
9.2. Worksets by Category								
10. Object Categories								
11. Schedules								
12. Phasing								
13. Design Options								
14. Sheets								
15. Views								
16. Shared Coordinates								
17. Groups								
18.1 Model Performance (MEP)								
18.2 Model Performance (Unhosted)								
19. Families								

Context Menu:

- Copy IDs
- Show Element(s)
- Select Element(s)

Buttons: Cancel, Process Families, Refresh, Export, Upload

02. PLUG INS: Sniffer

How many Instances of a **Group** do you have in the model?

CorbisSniffer

Project: Filter:

	Group	Group Type	Instances	Ids
0. Project information	30"x48"	Detail Group	6	30174686, 30175126, 30175178, 30175352, 30175579, 30764650
1. Native	60 min clr	Detail Group	2	30174531, 30175062
2. Revit Links	acc plan 3	Detail Group	1	30054477
3. DWG Links	ADA RR PATH	Detail Group	1	29784598
4.1. Imported DWG	ADA Symbol 3	Detail Group	1	30052683
4.2. Hatch types (exploded dwgs)	Group 12	Detail Group	1	30054237
5. Other Links	Group 15	Detail Group	1	30054238
6. Images	Group 21	Detail Group	1	30057456
7. Keynotes Links	Group 3	Detail Group	1	30050686
8. Warnings	Group 39	Detail Group	1	30051942
9.1. Worksets	Group 81	Detail Group	1	30050662
9.2. Worksets by Category	LOCKER DOOR 2	Detail Group	12	30052753, 30052786, 30052819, 30052852, 30052885, 30052918, 30052987, 30053020, 30053053, 30053086
10. Object Categories	STUD BOX HEADER CONNECTION 2	Detail Group	1	30662264
11. Schedules	tower	Model Group	0	
12. Phasing	TSN STIFF CLIP AL 362 W/ 4 SCREWS 3	Detail Group	1	30662273
13. Design Options	U-Bolt w/ Cable Clamp	Detail Group	1	30518237
14. Sheets				
15. Views				
16. Shared Coordinates				
17. Groups				
18.1 Model Performance (MEP)				
18.2 Model Performance (Unhosted)				
19. Families				

< >

Cancel Process Families Refresh Export Upload

02. PLUG INS: Sniffer

Process **Families** to know the size of each one

CorbisSniffer

Project: Filter:

	Category	Family	Type
0. Project information	Annotation - Area Tags	Area Tag	Area Tag
1. Native	Annotation - Callout Heads	Anno_CalloutHead_Nhst_tgt	Call Out Head
2. Revit Links	Annotation - Callout Heads	Callout Head	Callout Head
3. DWG Links	Annotation - Casework Tags	Casework Tag	Boxed
4.1. Imported DWG	Annotation - Casework Tags	Casework Tag	Standard
4.2. Hatch types (exploded dwgs)	Annotation - Ceiling Tags	Anno_CeilingTag_Nhst_tgt	Standard
5. Other Links	Annotation - Detail Item Tags	Anno_DetailItemTag_Nhst_tgt	Left Justify
6. Images	Annotation - Detail Item Tags	Anno_DetailItemTag_Nhst_tgt	Right Justify
7. Keynotes Links	Annotation - Door Tags	Anno_DoorExitTag_Nhst_tgt	No Arrow
8. Warnings	Annotation - Door Tags	Anno_DoorExitTag_Nhst_tgt	Plan East
9.1. Worksets	Annotation - Door Tags	Anno_DoorExitTag_Nhst_tgt	Plan North
9.2. Worksets by Category	Annotation - Door Tags	Anno_DoorExitTag_Nhst_tgt	Plan South
10. Object Categories	Annotation - Door Tags	Anno_DoorExitTag_Nhst_tgt	Plan West
11. Schedules	Annotation - Door Tags	Anno_DoorTag_Nhst_tgt	Door Tag 1/16"
12. Phasing	Annotation - Door Tags	Anno_DoorTag_Nhst_tgt	Door Tag 1/2"
13. Design Options	Annotation - Door Tags	Anno_DoorTag_Nhst_tgt	Door Tag 1/4"
14. Sheets	Annotation - Door Tags	Anno_DoorTag_Nhst_tgt	Detail Number
15. Views	Annotation - Elevation Marks	Anno_ElevationMarkBodyCircle_375_Nhst_tgt	Detail Number and View Name
16. Shared Coordinates	Annotation - Elevation Marks	Anno_ElevationMarkBodyCircle_375_Nhst_tgt	Filled Arrow
17. Groups	Annotation - Elevation Marks	Anno_ElevationMarkBodyCircle_375_Nhst_tgt	Filled Arrow and View Name
18.1 Model Performance (MEP)			
18.2 Model Performance (Unheated)			
19. Families			

Cancel Process Families Refresh Export Upload

02. PLUG INS: Sniffer

Export so you can have the information in **Excel**.

CorbisSniffer

Project: Filter:

Category	Family	Type
Annotation - Area Tags	Area Tag	Area Tag
Annotation - Callout Heads	Anno_CalloutHead_Nhst_tgt	Call Out Head
Annotation - Callout Heads	Callout Head	Callout Head
Annotation - Casework Tags	Casework Tag	Boxed
Annotation - Casework Tags	Casework Tag	Standard
Annotation - Ceiling Tags	Anno_CeilingTag_Nhst_tgt	Standard
Annotation - Detail Item Tags	Anno_DetailItemTag_Nhst_tgt	Left Justify
Annotation - Detail Item Tags	Anno_DetailItemTag_Nhst_tgt	Right Justify
Annotation - Door Tags	Anno_DoorExitTag_Nhst_tgt	No Arrow
Annotation - Door Tags	Anno_DoorExitTag_Nhst_tgt	Plan East
Annotation - Door Tags	Anno_DoorExitTag_Nhst_tgt	Plan North
Annotation - Door Tags	Anno_DoorExitTag_Nhst_tgt	Plan South
Annotation - Door Tags	Anno_DoorExitTag_Nhst_tgt	Plan West
Annotation - Door Tags	Anno_DoorTag_Nhst_tgt	Door Tag 1/16"
Annotation - Door Tags	Anno_DoorTag_Nhst_tgt	Door Tag 1/2"
Annotation - Door Tags	Anno_DoorTag_Nhst_tgt	Door Tag 1/4"
Annotation - Elevation Marks	Anno_ElevationMarkBodyCircle_375_Nhst_tgt	Detail Number
Annotation - Elevation Marks	Anno_ElevationMarkBodyCircle_375_Nhst_tgt	Detail Number and View Name
Annotation - Elevation Marks	Anno_ElevationMarkBodyCircle_375_Nhst_tgt	Filled Arrow
Annotation - Elevation Marks	Anno_ElevationMarkBodyCircle_375_Nhst_tgt	Filled Arrow and View Name

Cancel Process Families Refresh **Export** Upload

You can work in the Revit Model in the same time that you have opening Sniffer